

# Gobius<sup>®</sup>4

## Level indicator

# Measures from **the outside**

### Very quick installation

- Very easy to install
- You avoid the struggle with taking the tank apart
- No extra drilling of holes
- No need for extra service
- Very easy setup
- No mobile parts

### Complete system

On the sensors there are strips of tape that are provided to attach the sensors directly onto the surface of your tank. All necessary cables and plugs needed to connect the sensors and panel with the control unit and to external systems are included.

### Optimize for your need

- Flexible choice of lower & upper alarm level
- Calibrate when tank is empty or full
- Measuring interval 1, 5, 10 or 20 minutes
- Start/stop pump when tank is full or empty
- Add an external analogue display (VDO)

### Manage your tanks

- Gobius panel shows the fluid level
- Start/stop pumps
- Level information to your information system
- Level control of your tanks

### For all tank materials

- Stainless Steel, max. 3 mm
- Steel, max. 4 mm
- Aluminum, max. 4 mm
- Polyethen Plastic, max. 10 mm
- Fibre Glass, max. 5 mm

## Installed and ready to use in 30 minutes!

Gobius is the first level indicator in the world that measures the contents of tanks in stainless steel, steel, aluminum, plastic and fibre glass from the **OUTSIDE**. Gobius is reliable, regardless of the tank's size, shape, or amount of deposit on the inside of the tank wall.

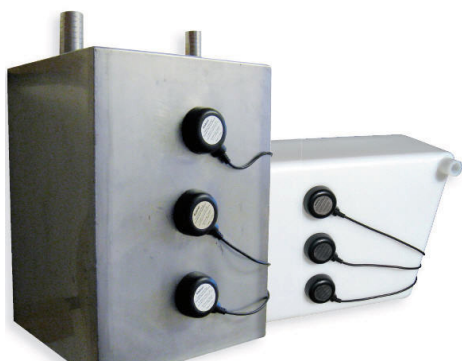
Level indication conducted from the outside of the tank means contact free measurement. The advantages of this is highly appreciated by the pharmaceutical, chemical and food industries, where demands on handling of corrosive and sterile liquids are very high.

- Quick to install and very easy to use
- Coloured lamps show the current fluid at 4 levels
- Automatic calibration
- Automatically checking the level
- Easy to integrate with other systems (4-20 mA)
- Very low electricity consumption
- Supports 12-24 Volts



### The Gobius Technology (patented)

Level indicator Gobius is based on our innovative Gobius Technology, best described as "knock and listen". Every sensor that is placed onto the tank wall consists of a shaker and an accelerometer. When the shaker creates a vibration in the tank wall, the accelerator measures the size of the vibration and passes the data on to the control unit. Each sensor is only 26 mm high with a diameter of 70 mm.



### Very easy to calibrate

No tanks look the same. There are always differences in e.g. size, construction, thickness and age. In order to compensate for these differences you have to calibrate the tank before you start to use your Gobius. However, the calibration only takes a few seconds, all you need to do is to press a button while the tank is full or empty.

### Very low electricity consumption, less than 40 mA (12 volts)

Gobius is constructed to minimise electricity consumption and is extremely efficient. Gobius sends power to its sensors in impulses instead of a continuous supply.

